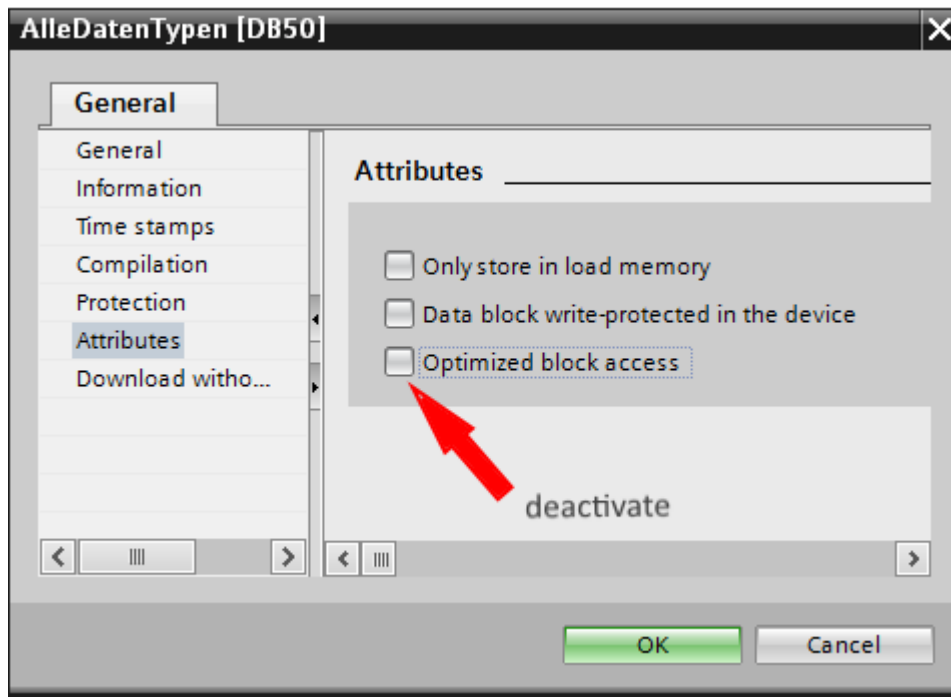
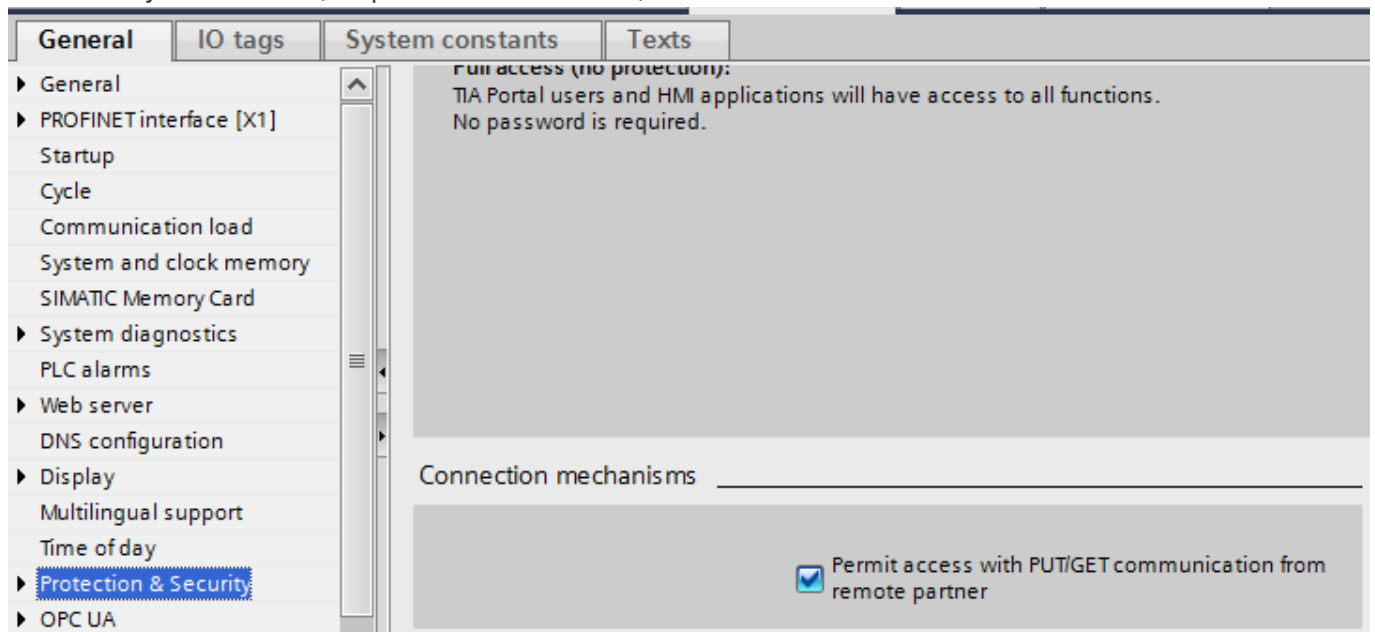


S7-1200/1500

The optimized block access needs to be deactivated in the data block attributes for access to the S7-1500 and S7-1200.

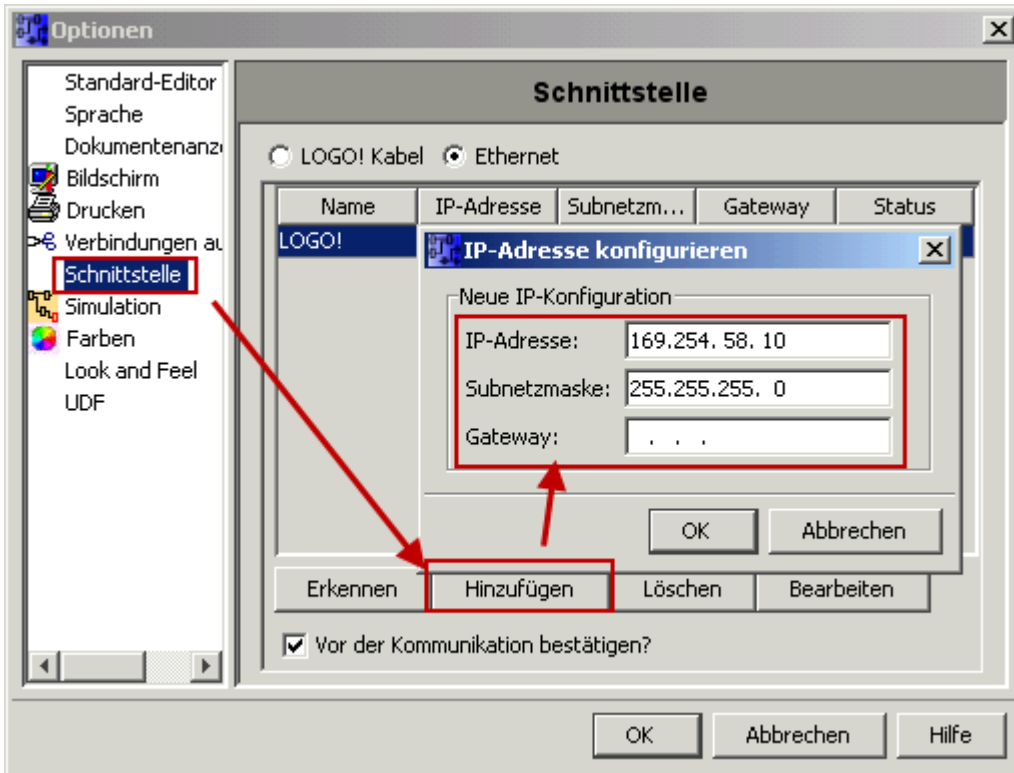


In the S7-1500 must be enabled in the communication setting in addition to the PUT / GET access . How this works you see here (snapshot from TIA Portal) .

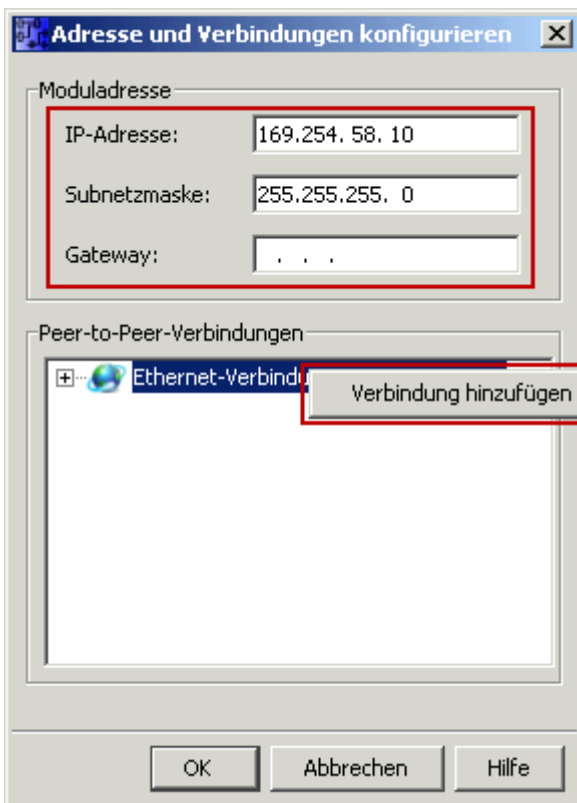


LOGO!

1. Use the Logo Soft Comfort the IP address of a logo! PLCs:



2. Configure PLCs so that connections from an HMI device accepted the Logo!. To do so, go to “Tools- > Ethernet Connections” and then add a new connection.



3. Double-click on the newly created connection to access the properties.

Verbindung1(Server)

Clientverbindung: fordert Datenübertragung zwischen lokalem PC und dezentraler SPS an
 Server-Verbindung: antwortet auf Verbindungsanforderungen dezentraler Clients

Eigenschaften lokaler Verbindungen (Server)

TSAP: 02.00

Mit Operator Panel (OP) verbinden

Alle Verbindungsanforderungen akzeptieren.

Nur diese Verbindung: . . .

Dezentrale Eigenschaften (Client)

TSAP: 02.00

Keep Alive (Verbindungskontrolle)

Keep-Alive-Funktion für diese Verbindung aktivieren

Keep-Alive-Intervall: 0 Sekunden

OK Abbrechen Hilfe

Select:

1. Server Connection
2. Local TSAP: 02:00 - 02:00 decentralized TSAP
3. accept all connections.

You can access DB1, inputs, outputs, flags, counters and timers with IP -S7 -LINK. Now put on " Tools- > VM parameter map " the variables that are to be transferred to the DB1.

WinCC (TIA-Portal) Variablentabelle

Standard-Variablentabelle				
Name	Datentyp	Verbindung	...	Adresse
Ein-/Ausschaltverzögerung	Word	Verbindung_1	...	VW 0
<Hinzufügen>				

LOGO!Soft Comfort

The screenshot shows a ladder logic diagram with an input block 'I', a timer block 'B002', and an output block 'Q1'. Below it, a dialog box titled 'Konfiguration des variablen Speichers' is open, showing a table for parameter-VM assignment:

ID	Block	Parameter	Typ	Adre...
1	B002 [Ein-/Ausschalt...	Aktualwert	Word	0
2				

Below the dialog box, another ladder logic diagram shows an analog input block 'AI', an analog controller block 'B001', and an analog output block 'AQ1'. Parameters like Gain=1.0, Offset=0, and Point=0 are visible.

Table of Contents

S7-1200/1500	1
LOGO!	1

